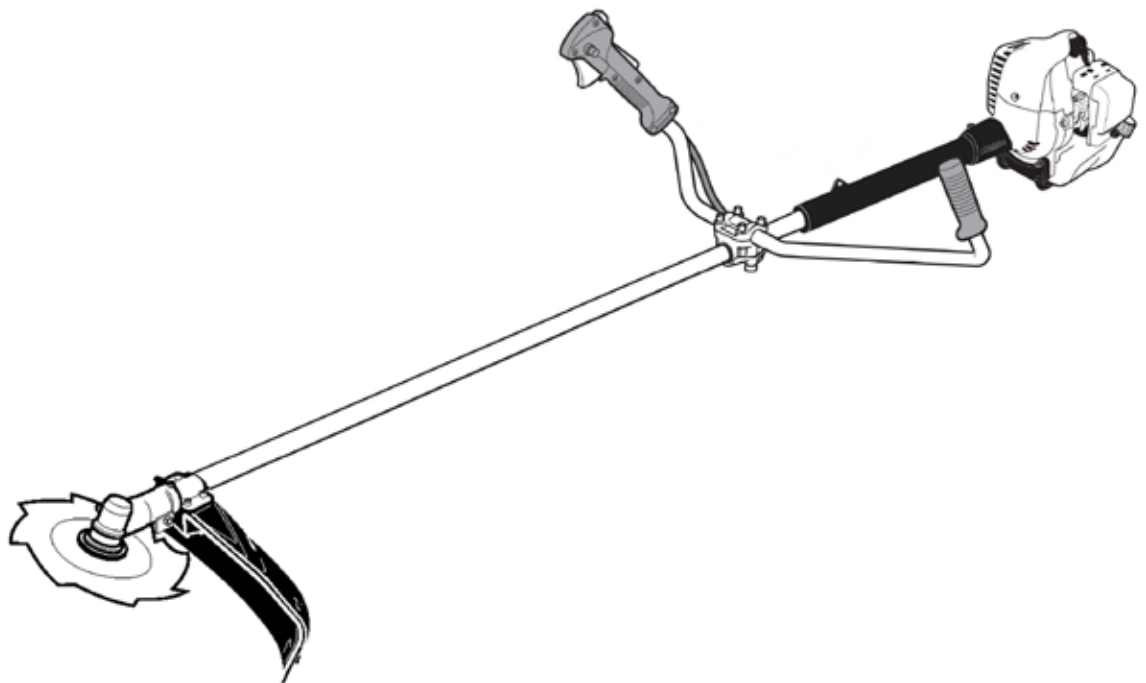


**SHINDAIWA GRASS TRIMMER TO BRUSHCUTTER
CONVERSION KIT FOR T242 GRASS TRIMMER**

MODEL: BCK-10



WARNING!

Minimize the risk of injury to yourself and others! Read the Owner's/Operator's manual originally supplied with the unit that is being upgraded and familiarize yourself with the contents. Always wear eye and hearing protection when operating your unit.

Introduction

These are instructions to convert a grass trimmer to a blade capable unit. This is not an Owner's/Operator's manual. Information on how to operate and maintain the unit can be found in the Owner's/Operator's manual for the unit you are converting. Note this kit is supplied with a cutting attachment shield that has been redesigned to provide better visibility and a larger cutting swath when used as a grass trimmer.

IMPORTANT!

If the cutting attachment shield has been removed from your unit or the unit was manufactured prior to October 2001, an additional clamp kit will be required to complete this installation. The clamp kit required is Shindaiwa part number 80293.

IMPORTANT!

The information contained in these instructions describes the product available at the time of publication.

Echo, Inc. reserves the right to make changes to products without prior notice, and without obligation to make alterations to units previously manufactured.

Contents

	PAGE		PAGE		PAGE
Attention Statements	2	General Safety Instructions	3	Assembly	4
Safety Labels	3	Kit Contents	3	Shoulder Strap	11
				Using a Brushcutter Blade	12

Attention Statements

Throughout this manual are special "attention statements".



WARNING!

A statement preceded by the triangular attention symbol and the word "WARNING" contains information that should be acted upon to prevent serious bodily injury.

CAUTION!

A statement preceded by the word "CAUTION" contains information that should be acted upon to prevent mechanical damage.

IMPORTANT!

A statement preceded by the word "IMPORTANT" is one that possesses special significance.

NOTE:

A statement preceded by the word "NOTE" contains information that is handy to know and may make your job easier.

IMPORTANT!

The instructions described in this manual are intended to help you get the most from your Shindaiwa power tool as well as to protect you and others from harm. These procedures are guidelines for safe operation under most conditions, and are not intended to replace any safety rules and/or laws that may be in force in your area. If you have questions regarding your Shindaiwa power tool, or if you do not understand something in these instructions, your Shindaiwa dealer will be glad to assist you. You may also contact Shindaiwa at the address printed on the back of this instructional manual.



Read and follow this operators manual. Failure to do so could result in serious injury.



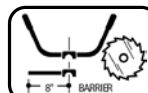
Wear eye and hearing protection at all times during the operation of this unit.



Keep bystanders at least 50 feet (15 m) away during operation.



Beware of thrown or ricocheted objects.



Do not operate this unit with a blade unless the unit is equipped with a Shindaiwa-approved handlebar or barrier.

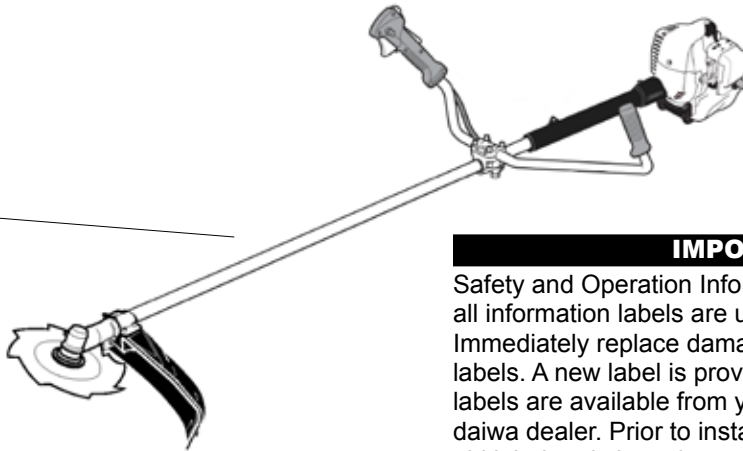


Always wear a harness when operating this unit with a blade. A harness is also recommended when using trimmer line.



If unit is used as a brushcutter, beware of blade thrust. A jammed blade can cause the unit to jerk suddenly and may cause the operator to lose control of the unit.

Safety Labels



IMPORTANT!

Safety and Operation Information Labels: Make sure all information labels are undamaged and readable. Immediately replace damaged or missing information labels. A new label is provided in this kit and additional labels are available from your local authorized Shin-daiwa dealer. Prior to installing the new label, Remove old label and clean the outer tube with rubbing alcohol or similar cleaner.

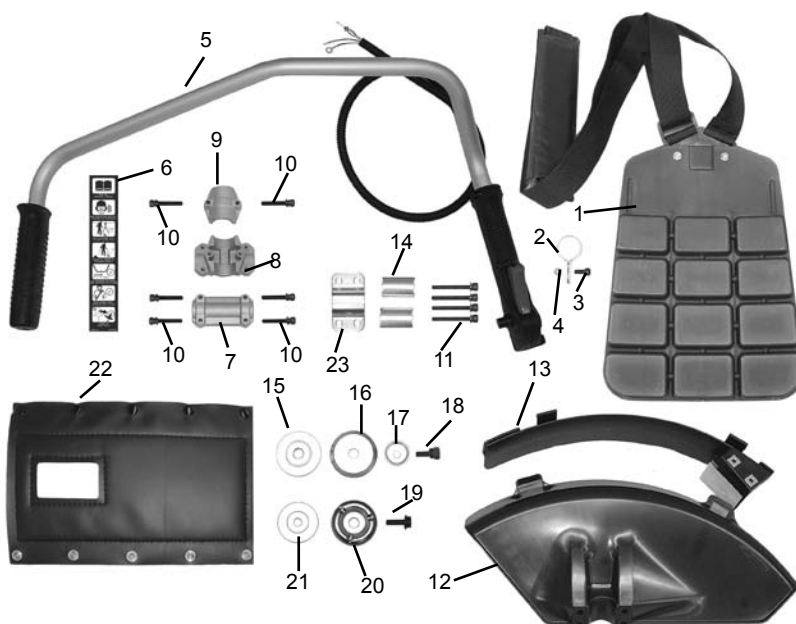
General Safety Instructions



WARNING!

- When operating with a blade, make sure the handle is positioned to provide you with maximum protection from contacting the blade. Always make sure the handlebar is installed in accordance with the manufacturers instruction.
- **NEVER** use a cracked or warped blade: If a properly installed blade vibrates, replace it with a new one and re-check.
- **ALWAYS** Shut off the engine immediately if a blade binds in a cut. Push the branch or tree to ease the bind and free the blade.
- Beware of a coasting blade when brushcutting. A coasting blade can injure while it continues to spin after the throttle trigger is released or after the engine is stopped.

Kit Contents



#	Description	Qty
1	Shoulder Strap w/ hip pad	1
2	Hanger	1
3	5mm x 12mm HSH Screw	1
4	5mm Hex Nut	1
5	Handle Bar Assembly	1
6	Caution Label	1
7	Upper Handlebar Cap	1
8	Handlebar Mounting Bracket	1
9	Lower Handlebar Cap	1
10	Hex Soc. Head Bolts, 5mm x 25mm	6
11	5mm x 45mm Bolts	4
12	Debris Shield	1
13	Debris Shield Extension	1
14	Spacer	2
15	Holder A (A1)	1
16	Holder B (B1)	1
17	Bolt Guard	1
18	Hex Head Bolt 7mm x 20mm w/ lock washer (D1)	1
19	Hex Head Bolt w/Flat Washer 7 mm x 24 mm (D2)	1
20	Holder/Bolt Guard B2	1
21	Holder A2 (small-36 mm)	1
22	Shaft Cushion	1
23	Upper Clamp Assembly Tool (s)	1

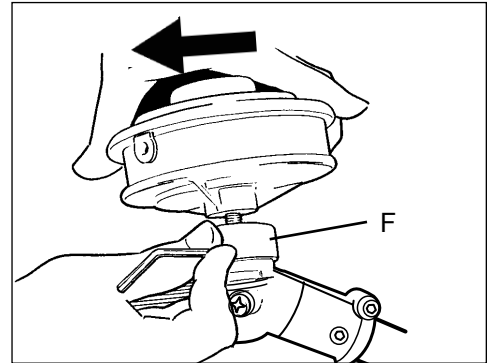
Assembly

Remove Cutting Attachment

1. Turn the unit over so that the gearcase output shaft faces UP.

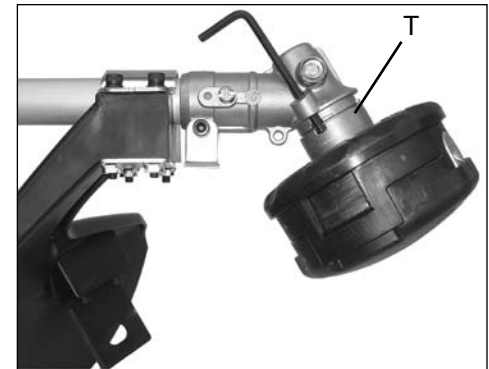
Gearcase with notched flange:

2. Align the hole in the holder with the notch in the gearcase flange, and then temporarily lock the output shaft by inserting a hex wrench through both holes.



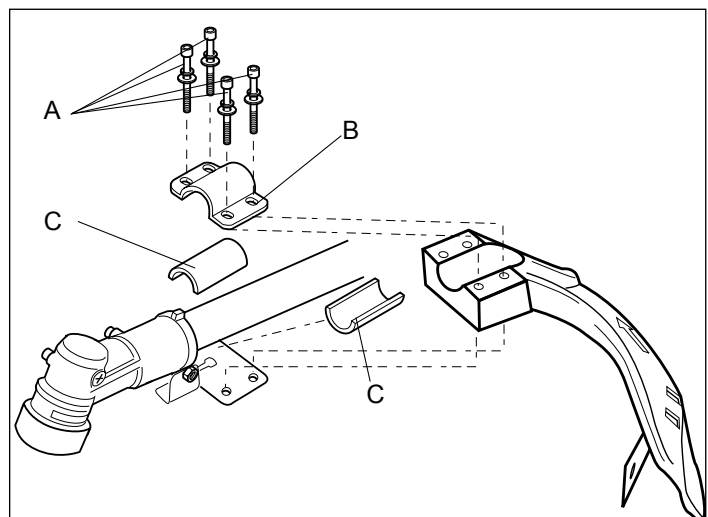
Gearcase with side-mounted locking hole:

3. Align the notch in trimmer head holder T with the notch in the gear case flange. Lock the holder and output shaft by inserting a hex wrench through the locking hole in the gear case and into the aligned notches.
4. While holding the hex wrench turn the trimmer head clockwise to remove.
5. Remove the hex wrench.
6. Remove trimmer head holder (F) or (T).



Removing the Existing Cutting Attachment Shield

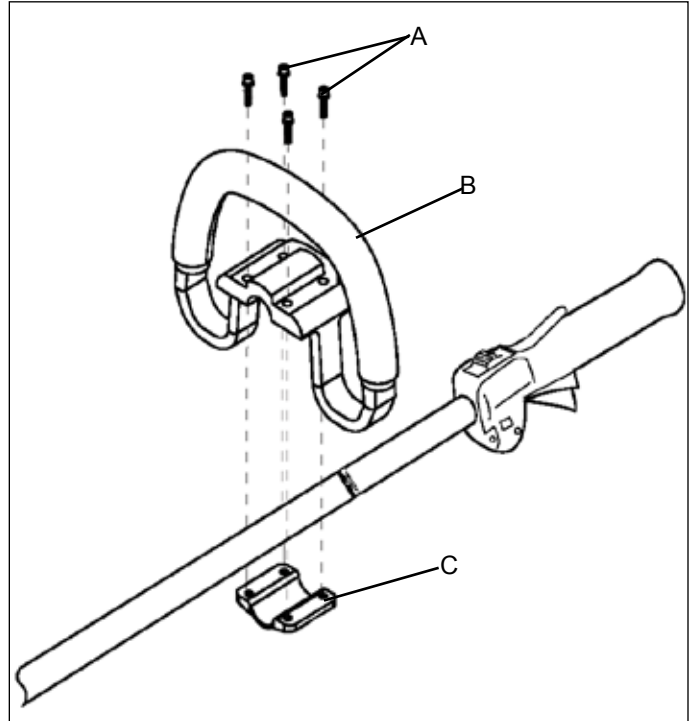
1. Remove the four socket-head cap screws (A), upper clamp (B), and two shims (C).
2. Remove the cutting attachment shield from the gearcase.



Remove Handle Assembly

T242 with 4-screw Handle

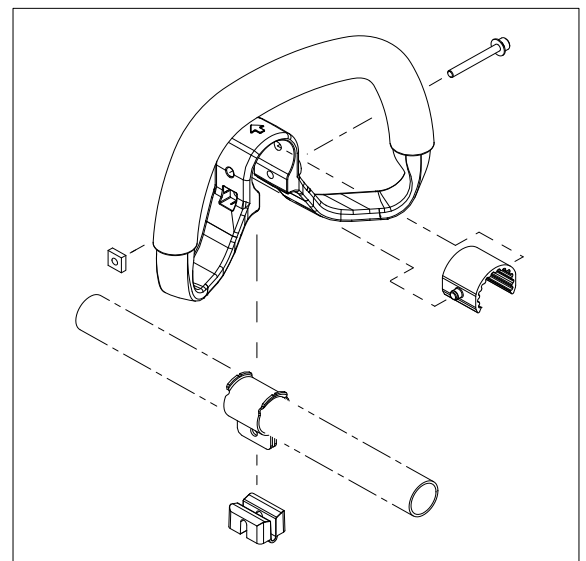
1. Remove the four socket-head cap screws (A) on the handle (B) and remove the handle (B) and mounting bracket (C).



Remove Handle Assembly

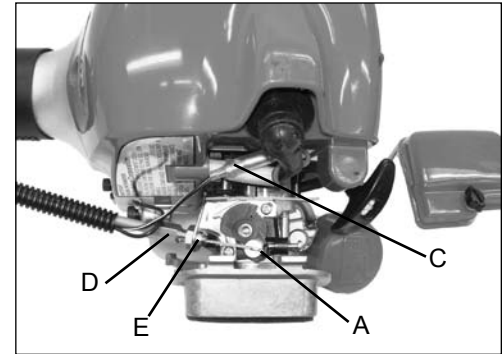
T242 with 1-screw Handle

1. Remove handle assembly. Retain all parts for future use.



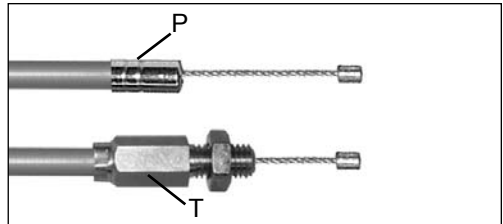
Disconnect Throttle Cable-Ignition Wires

1. Loosen air cleaner cover knob and remove air cleaner cover.
2. Remove wire end of throttle linkage cable (A) from carburetor throttle swivel hole.
3. Disconnect 2 ignition stop switch leads:
 - a. Disconnect wire with ring terminal from grounding screw (B) on engine.
 - b. Pull quick-connect connectors (C) apart to disconnect remaining stop switch wire.



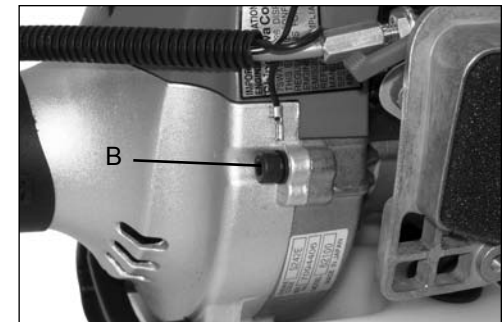
Units with plain throttle cable end (P).

4. Remove throttle linkage cable from adjustment fixture (D).
5. Unscrew throttle cable adjustment fixture (D) and lock nut from carburetor throttle cable bracket, and discard.



Units with throttle cable adjustment fixture attached to cable end (T):

6. Unscrew throttle linkage cable with attached cable adjustment fixture and nut (T) from carburetor throttle cable bracket (E).

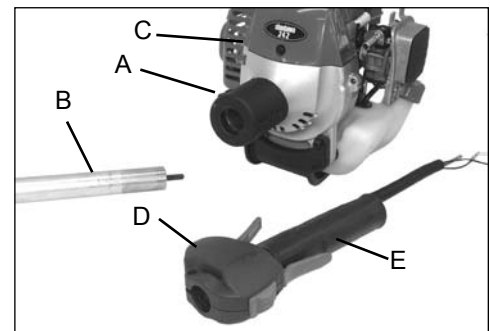


Remove Power Head

1. Loosen drive shaft clamping bolt (A).
2. Pull outer tube (B) and drive shaft out of power head (C).

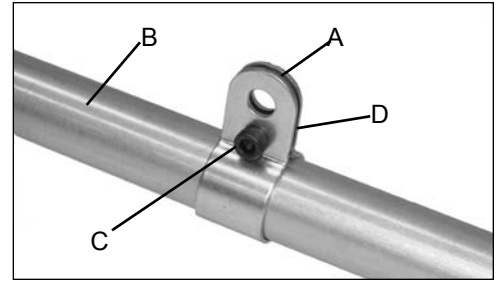
Remove Throttle Control Handle Assembly

1. Loosen handle clamp screw (D), and remove throttle control assembly and cushioned hand grip (E) from outer drive shaft tube.



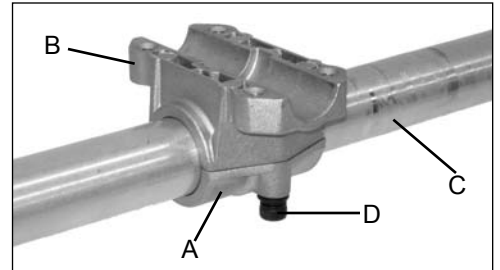
Install Harness Hanger

1. Slide harness hanger (A) on to outer drive shaft tube (B) and loosely attach with 5 mm x 12 mm screw (C) and nut (D). Do not tighten screw securely until final adjustments are completed.



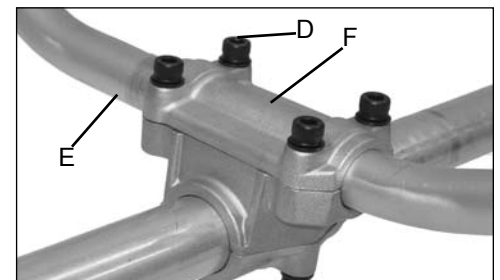
Install Power Head

1. Slide outer drive shaft assembly into power head clamp, and align power head with gear case.
2. Secure drive shaft assembly with clamping bolt.



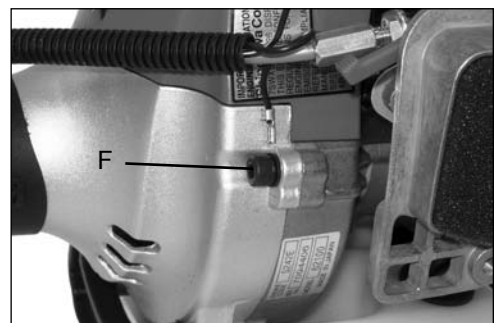
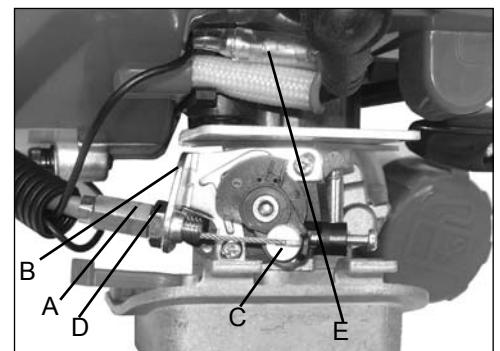
Install Handlebar Bracket and Handlebar

1. Install lower handlebar cap (A) and handle bar mounting bracket (B) on outer drive shaft tube (C) using (2) 5 mm x 25 mm socket head cap screws (D). Do not tighten screws securely until final adjustments are completed.
2. Place handle bar (E) in mounting bracket, and secure with upper handlebar cap (F) and (4) 5 mm x 25 mm socket head cap screws (D). Do not tighten screws securely until final adjustments are completed.



Throttle Linkage and Ignition Leads

1. Thread throttle cable adjuster (A) into throttle cable bracket (B), and install wire end into large carburetor swivel hole (C). Check throttle for freedom of movement and that wide open throttle/low idle extremes are adjusted properly. Turn the cable adjuster in or out to make adjustments. After adjusting, hold the cable adjuster (A), and tighten the cable adjuster nut (D) against the cable bracket (B) to lock the setting.
2. Connect 2 ignition stop leads from throttle cable tubing to ignition leads on engine (E) and grounding screw (F).
3. Reinstall the air cleaner cover.



Install New Cutting Attachment Shield

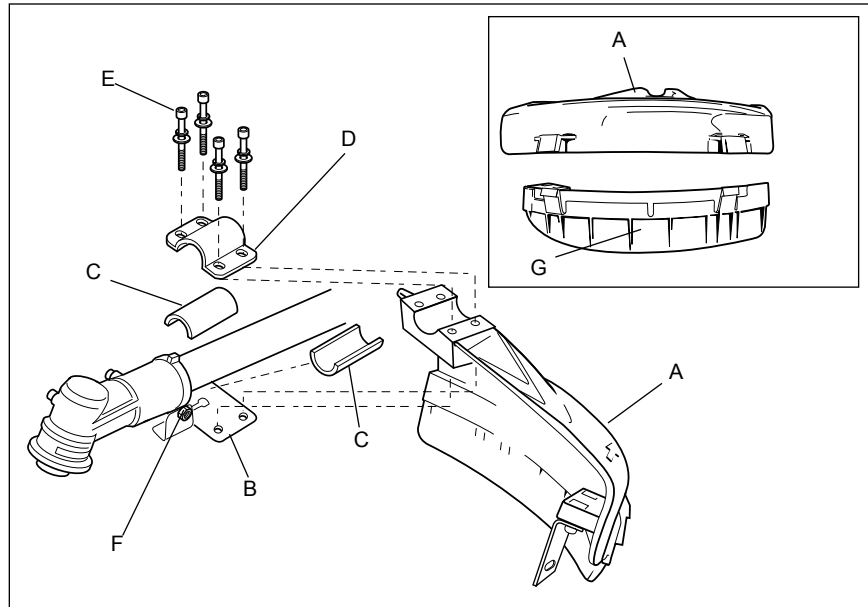
Assemble the Cutting Attachment Shield to the Outer Tube.

1. Insert the cutting attachment shield (A) between the outer tube and the cutting attachment mounting plate (B).
2. Fit the two shims (C) and the upper clamp (D) over the outer tube and install the four socket-head cap screws (E) finger tight.

CAUTION!

Make sure the clamp screw and retaining nut (F) are securely tightened before tightening the four socket head screws.

3. Tighten the four socket-head cap screws to secure the cutting attachment shield.



WARNING!

NEVER operate the unit without the cutting attachment shield installed and tightly secured!



WARNING!

A cutting attachment shield or other protective device is no guarantee of protection against ricochet. YOU MUST ALWAYS GUARD AGAINST FLYING DEBRIS!

Sub-Shield.

(when trimmer head is in use)

1. Attach the sub-shield (G) extension to the cutting attachment shield (A).



WARNING!

NEVER use this machine without sub-shield when using a trimmer head.

CAUTION!

Make sure the sub-shield is completely hooked at the hook receiver.

Installing Brushcutter Blade

Gear Case with notched flange:

1. Install large blade holder (A1) onto output shaft (G).
2. Align the hole in the blade holder with the matching notch in the gear case flange, and then temporarily lock the output shaft by inserting a hex wrench through both holes. Hold hex wrench in place until blade retaining bolt is tightened.
3. Fit the blade over the flange on holder (A1).

CAUTION!

Install the blade (E) so its printed surface is visible to the operator when the brushcutter is in the normal operating position.



WARNING!

The blade must fit flat against the holder flange. The blade mounting hole must be centered over the raised boss on blade Holder (A1).



WARNING!

Holder (B1) must fit flush against the blade and the splines engaged to the output shaft.

4. Install large blade holder B1 on the output shaft (G).



WARNING!

Do not attach any blade to a unit without proper installation of all required parts. Failure to use the proper parts can cause the blade to fly off and seriously injure the operator and/or bystanders.

5. Install the bolt guard (C) and then the 7 x 20mm blade retaining bolt with lockwasher (D1). Using the combination spark plug wrench/screwdriver, tighten the bolt firmly in a counter-clockwise direction.
6. Remove hex wrench.

The unit should now be completely assembled and ready for use with a blade.

IMPORTANT!

Units with adjustable carburetors must be readjusted for blade use, otherwise serious engine damage can occur.

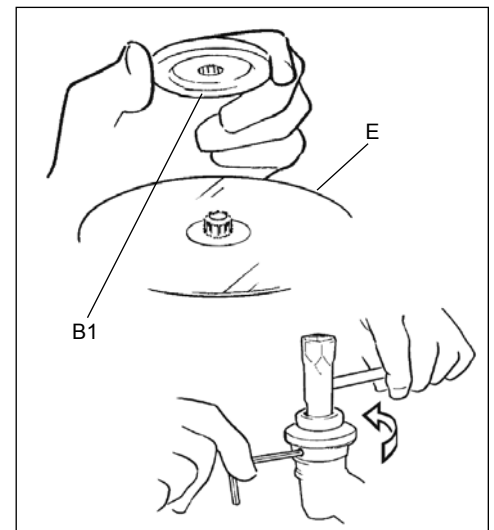
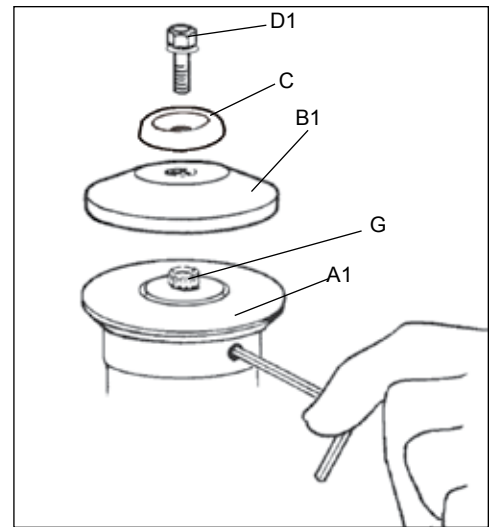
IMPORTANT!

Discard blades that are bent, warped, cracked, broken or damaged in any way. Use a sharp blade. A dull blade is more likely to snag and thrust.



WARNING!

A standard grass trimmer unit with loop handle should NEVER be operated with blade-type attachments. For blade use, the trimmer must be fitted with a bicycle-type handlebar or barrier bar that is located in front of the operator to reduce the risk of the operator coming in contact with the cutting attachment. (Per ANSI B175.3). When using a blade, the unit must be equipped with a harness or strap.



Gear Case with side-mounted locking tool hole:

1. Install small blade holder (A2) onto output shaft (G).
2. Align the notch in blade holder (A2) with the notch in the gear case flange. Lock the holder and output shaft by inserting a hex wrench through the locking hole in the gear case and into the aligned notches. Hold hex wrench in place until blade retaining bolt is tightened.
3. Fit the blade over the flange on holder (A2).

CAUTION!

Install the blade (E) so its printed surface is visible to the operator when the brushcutter is in the normal operating position.



WARNING!

The blade must fit flat against the holder flange. The blade mounting hole must be centered over the raised boss on blade Holder (A1).



WARNING!

Holder (B1) must fit flush against the blade and the splines engaged to the output shaft.

4. Install blade holder/bolt guard (B2) on the output shaft (G).



WARNING!

Do not attach any blade to a unit without proper installation of all required parts. Failure to use the proper parts can cause the blade to fly off and seriously injure the operator and/or bystanders.

5. Install the 7 x 24mm blade retaining bolt with flat washer (D2). Using the combination spark plug wrench/screwdriver, tighten the bolt firmly in a counter-clockwise direction.
6. Remove hex wrench.

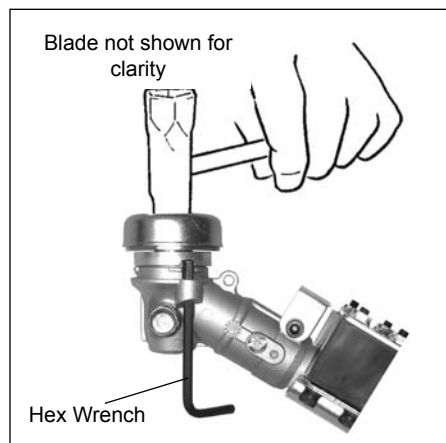
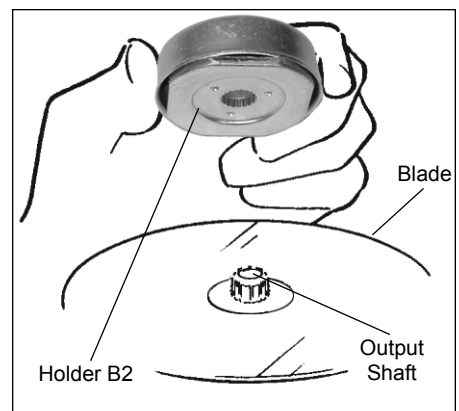
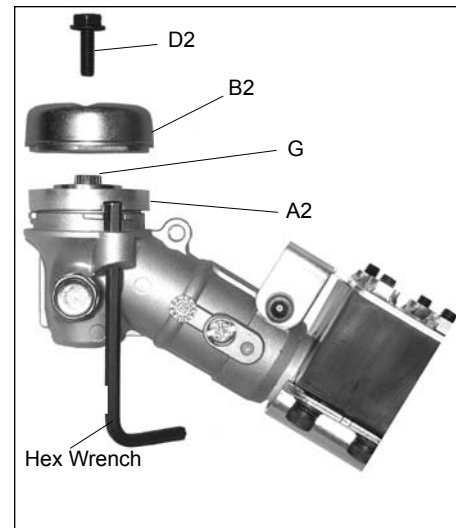
The unit should now be completely assembled and ready for use with a blade.

IMPORTANT!

Units with adjustable carburetors must be readjusted for blade use, otherwise serious engine damage can occur.

IMPORTANT!

Discard blades that are bent, warped, cracked, broken or damaged in any way. Use a sharp blade. A dull blade is more likely to snag and thrust.



WARNING!

A standard grass trimmer unit with loop handle should NEVER be operated with blade-type attachments. For blade use, the trimmer must be fitted with a bicycle-type handlebar or barrier bar that is located in front of the operator to reduce the risk of the operator coming in contact with the cutting attachment. (Per ANSI B175.3). When using a blade, the unit must be equipped with a harness or strap.

Shoulder Strap

Adjust the shoulder strap so the shoulder pad rests comfortably on the off-side shoulder and the cutting path of the cutting attachment is parallel to the ground. Tighten hanger screw.



WARNING!

Always wear a shoulder strap when operating this unit with a blade. A shoulder strap is also recommended when using trimmer line.

NOTE:

Using a shoulder strap with a brush-cutter allows you to maintain proper control of the unit and reduces fatigue during extended operation.

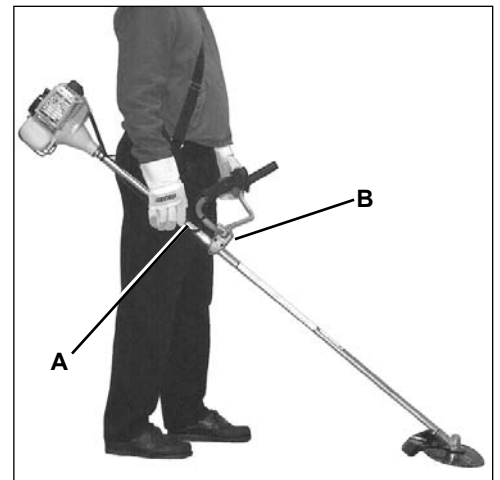
NOTE:

Although a shoulder strap accessory is not required for use with a grass trimmer, a shoulder strap can increase operator comfort during extended periods of operation.



BALANCE AND ADJUST UNIT

1. Loosen harness clamp screw.
2. Put on harness and attach unit to harness.
3. Slide harness clamp up (A) or down until unit balances with head approximately 50-75 mm (2 -3 in.) from the ground.
4. Tighten harness clamp screw.
5. Loosen Handle bar clamp screws (B), and position Handle bar for comfortable operation.
6. Tighten Handle bar clamp screws securely.

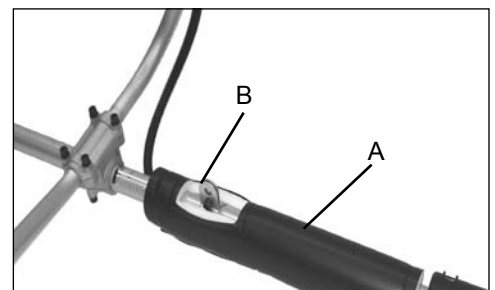


Install Shaft Cushion

1. Route plastic tubing alongside outer tube, and secure to tube with cushion (A).

NOTE:

Cutout in cushion must be placed over harness hanger (B) to allow harness hook connection.



Using A Brushcutter Blade



WARNING!

- Before working with a blade-equipped unit, always inspect and clean the area of objects that could interfere with or damage the blade.
- Never use a blade near sidewalks, fence posts, buildings or other objects that could cause injury or damage.
- Never use a blade for purposes other than those for which it was designed.
- Whenever you strike a hard object with a blade, always stop the brushcutter and carefully inspect the blade for damage. **NEVER OPERATE THE UNIT WITH A DAMAGED BLADE!**
- A blade-equipped unit **must** be equipped with a bicycle-type handlebar or barrier as well as a harness or strap.
- Always make sure the cutting attachment shield is properly installed before operating the unit.

Blade Thrust

'Blade thrust' is a sudden sideways or backward motion of the brushcutter. Such motion may occur when the blade jams or catches on an object such as a sapling tree or tree stump. **BE CONSTANTLY ALERT FOR BLADE THRUST AND GUARD AGAINST ITS EFFECTS!**

Handle Bar

A brushcutter's handle bar helps prevent the operator from moving forward, or the unit moving rearward, thus preventing inadvertent bodily contact with the blade. **ALWAYS KEEP THE HANDLE BAR SECURELY IN PLACE ON THE UNIT!**

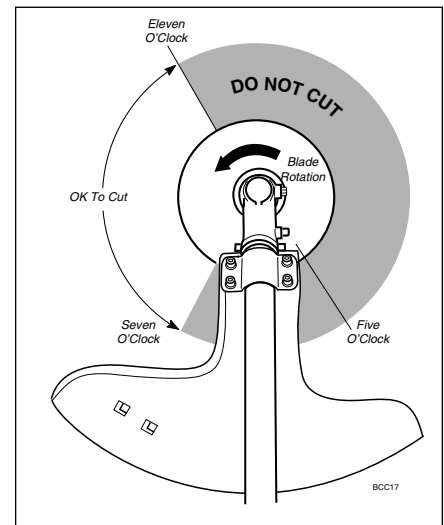
Shoulder Strap or Harness

A shoulder strap or harness provides additional protection against blade thrust. In addition, a shoulder strap or harness gives significant support and comfort to help ensure safe and efficient operation.

When operating a unit equipped with a blade, make sure both the handle/barrier bar and shoulder strap or harness are adjusted to the size of the operator using the unit.

The blade rotates counter-clockwise. For best performance and to minimize being struck by debris, move the blade from right to left while advancing on your work.

Position the blade so cuts are made between the blade's 7 o'clock and 11 o'clock positions (as viewed from above). **DO NOT** cut between the 11 o'clock and 5 o'clock positions (shaded area).



NOTES

[illegible]

NOTES

[illegible]

NOTES

[illegible]

Consumer Product Support

If you require assistance or have questions concerning the application, operation or maintenance of this product you may call the Shindaiwa Consumer Product Support Department at 1-877-986-7783 from 8:30 am to 4:30 pm (Central Standard Time) Monday through Friday. Before calling, please know the model and serial number of your unit.

shindaiwa®

ECHO Incorporated.
400 Oakwood Road
Lake Zurich, IL 60047-1564 U.S.A.
Telephone: 1-877-986-7783
Fax: 1-847-540-8416
www.shindaiwa.com

Yamabiko Corporation
7-2 Suehirocho 1-Chome, Ohme,
Tokyo, 198-8760, Japan
Phone: 81-428-32-6118
Fax: 81-428-32-6145